



RENEWAL!

SCHOOL PROGRAM AND OPERATIONS LEVY 2022



WHO WE ARE



10 schools



**62% of teachers
have master's degree**



5,314 students



19 average class size



962 employees



40 athletic teams



**90% graduation
rate**



**46 extracurricular
clubs/activities**

WHAT WE ARE CELEBRATING



WHERE OUR MONEY COMES FROM



WA STATE FUNDING



LOCAL FUNDING



FED. GOVT. FUNDING



GRANTS & OTHER SOURCES

LOCAL FUNDING

LEVY

Levies are for Learning

Levies help pay for educational costs not fully funded by the state.



Classroom support



Safety & security



Student programs



Transportation



Nurses & mental health staff



Supplies & materials

Levies must be approved by 50% + 1

BOND

Bonds are for Building

Bonds cannot pay for programs or the day-to-day operations of a school district.



New construction



Modernization projects/facility upgrades



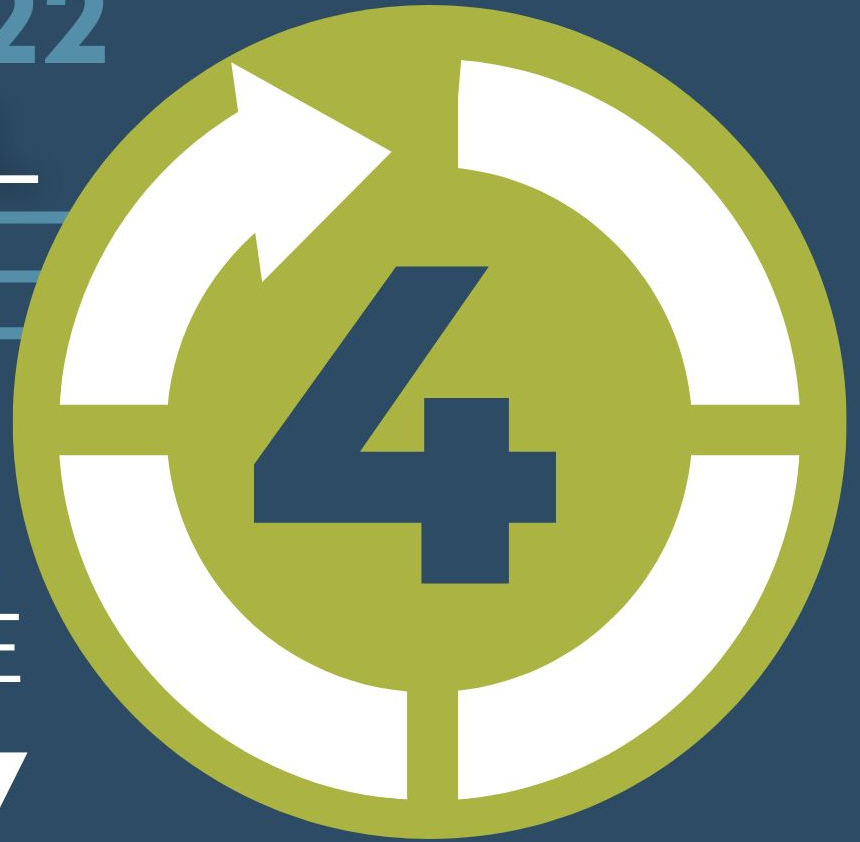
Property purchases

Bonds must be approved by 60% + 1

NOVEMBER 2022 LEVY RENEWAL

**FOUR YEAR
LEVY CYCLE**

IT IS NOT A NEW TAX



MONROE
SCHOOL DISTRICT

WHAT THE SP&O LEVY PAYS FOR



Athletics & extracurricular activities



Additional teachers



School safety and security



Student transportation



Additional nurses,
counselors, paraeducators



Special education programs



Professional learning for staff



Operations and building
maintenance costs



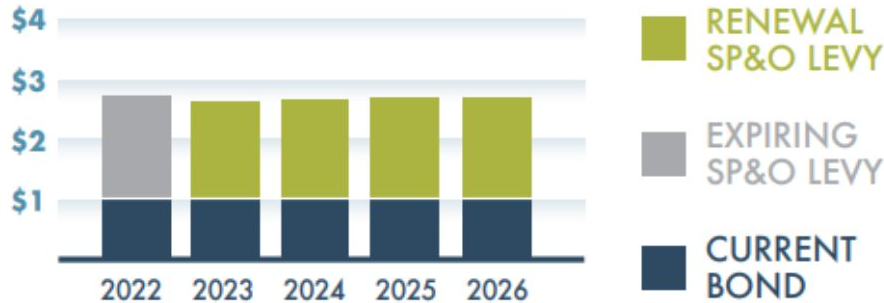
Supplies and materials

SP&O RENEWAL LEVY TAX RATES

If approved by voters, the renewal of the SP&O levy will generate the following total levy amounts, which will allow us to maintain the programs and services that our students and families have come to expect in Monroe.

Total Monroe School District Tax Rate

If approved by voters, the renewal of the SP&O Levy would allow the school district to collect an estimated \$1.71 per \$1,000 of assessed property value.



Year	Total Levy Amount	Tax Rate
2022	\$15,741,150	\$1.79
2023	\$15,890,376	\$1.71*
2024	\$16,767,086	\$1.72*
2025	\$17,672,509	\$1.73*
2026	\$18,607,442	\$1.73*

*estimates based on 2022 assessed property values

HOW OUR TAX RATE COMPARES

District	Total Local School Tax Rate* (includes bonds and levies)
Snohomish School District	\$4.40
Everett School District	\$3.73
Lake Stevens School District	\$3.42
Northshore School District	\$3.25
Monroe School District	\$2.61
Sultan School District	\$2.07

*2022 rates per \$1,000 of assessed property values



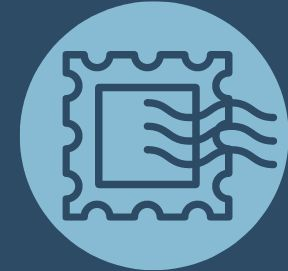
VOTING DETAILS



All-mail election



Ballots mailed
Oct. 20



Must be postmarked
by Nov. 8 at midnight



24-hour secure ballot drop box at the Monroe Library on Village Way

MORE INFORMATION



www.monroe.wednet.edu/community/bonds-levies



communications@monroe.wednet.edu



[@MonroeWASchools](https://www.instagram.com/MonroeWASchools)

